

HWC Industrial Site

Chester, South Carolina

www.sccommerce.com



Site Information and Location Map

Location

Community: Chester
County: Chester

Physical Characteristics

Size: 294 acres/119 hectares
Subdividable: Yes, by 50 acre(s)
Price Per Acre: \$25,000
Price Range: \$15,000 to \$25,000
Soil Type: Sandy Loam
Elevation Range: 466 to 603 feet



Transportation Access

Interstate(s): I-77: 4 miles/6 km; I-20 : 51 miles/82 km
Commercial Airport: Charlotte-Douglas International: 38 miles/61 km
Private Airport: Chester Municipal: 10 miles/16 km
Rail: None
Container Port: Charleston : 171 miles/274 km

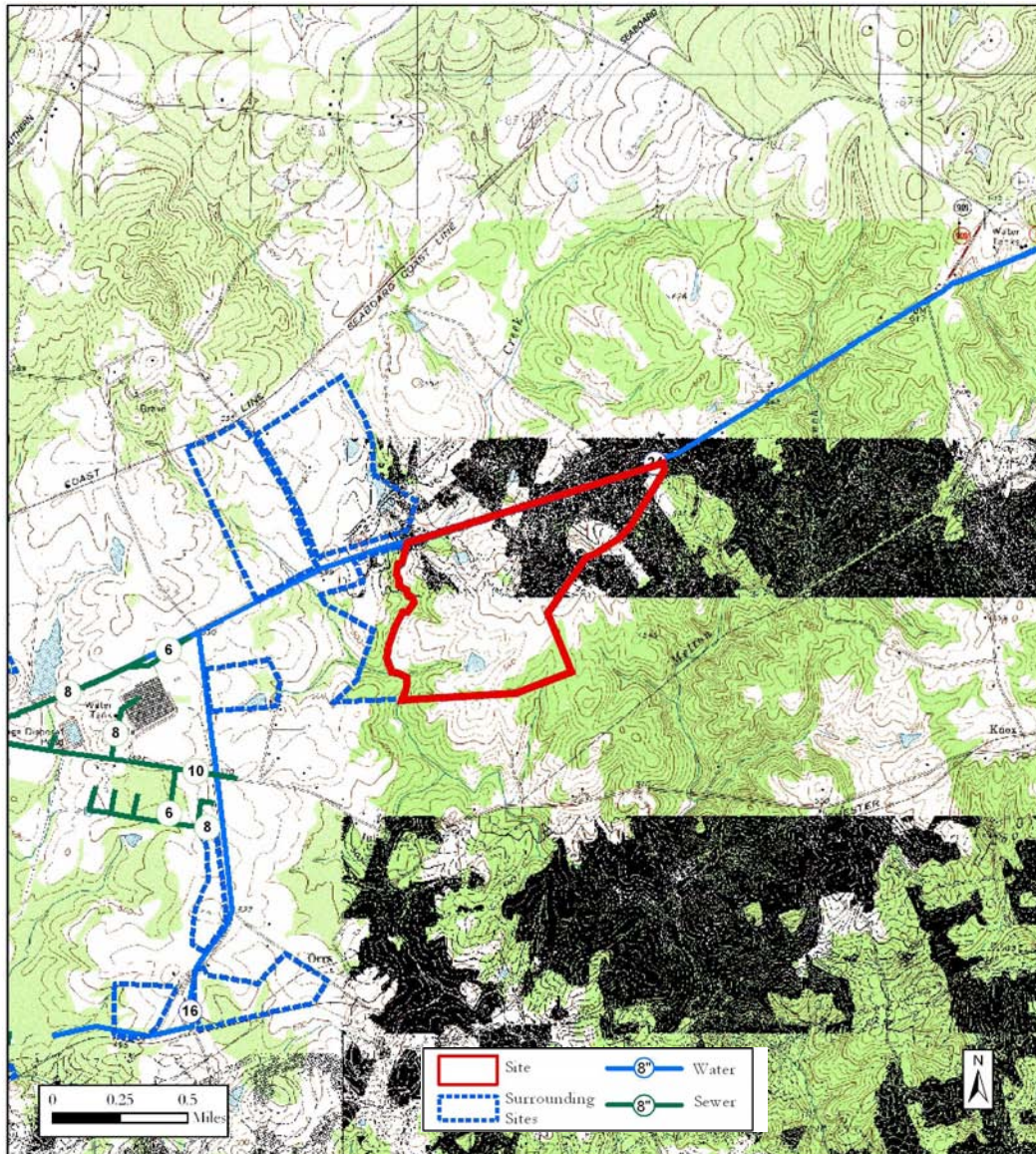
Community Information

Rural Development Act: Distressed
Foreign Trade Zone: No
Multicounty Industrial Park: Yes
Related Counties: York
Tax Map ID: 98-0-0-42
Zoned Industrial: Yes
Zoning or Regulations: Zoned Industrial
Current Landuse(s): Agricultural
Surrounding Landuse(s): Agricultural, Industrial, Comm

Contacts

| | |
|--|---|
| South Carolina Department of Commerce 1201 Main Street, Suite 1600 Columbia, SC 29201 (803) 737-0400 info@sccommerce.com | Chester County Economic Development PO Box 580 Chester SC 29706 (803) 581-0942 |
|--|---|

This is a product of the South Carolina Department of Commerce (DOC). The information is derived from various sources and the DOC does not guarantee its accuracy nor make any representations concerning the suitability of the property for any particular purpose.



Utilities and Services

| | | |
|-------------------|---|---|
| Water Service: | Chester Metro line in SC 9 median on N bdy, 2.18 MGD | Remaining Capacity: 2.18 million gallons/day Size: 24 inches |
| Sewer Service: | Chesterfield/Thompson Creek 1.4 mi away | Remaining Capacity: 0.087 million gallons/day Size: 8 inches |
| Electric Service: | Duke Power Company | |
| Natural Gas: | Chester County 1.9 mi away at SC 9 and Beltline Rd | Size: 6 inches |
| Fire Protection: | Chester Fire Dept. | Rating: 4 |

